



HEBEI LANGDUO METAL PRODUCTS CO.,LTD

WHATEVER IS WORTH DOING IS WORTH DOING WELL!



WELCOME YOUR VISITING

HEBEI LANGDUO METAL PRODUCTS CO.,LTD

WEBSITE: www.metalstairparts.com

ALIBABA: <http://jydhome.en.alibaba.com>

<https://hbldmetal.en.alibaba.com>

ADDRESS: No. 700 Zhongshan West Road, Shijiazhuang, Hebei, China.

TEL/Wechat: 86-13081090327

Email: JYDhome@yeah.net; Sales@metalstairparts.com; Joan@hbldmetal.com.



ABOUT US

Hebei Langduo Metal Products Co, Ltd.,is a factory that located in Shijiazhuang city, covered an area of 3000 square meters,has more than 10 years of production experience,which specializes in the production and sales of wrought iron products, aluminum parts and other matched products. The previous name of Foreign Trade Department was Yiwu Qiaoan Yueda E-Commerce Firm,it was renamed Hebei Langduo Trading Co.,Ltd. on January 6,2020.

Our production workshops have a variety of machines, more than 50 sets, such as bending machine, punching machine, forging machine, laser welding machine, laser cutting machine, etc. In addition, we are also equipped with powder coated lines to meet the needs of customers.

At present, there are more than 50 workers in our factory, the annual export is about \$2 million, and the trend is increasing every year.

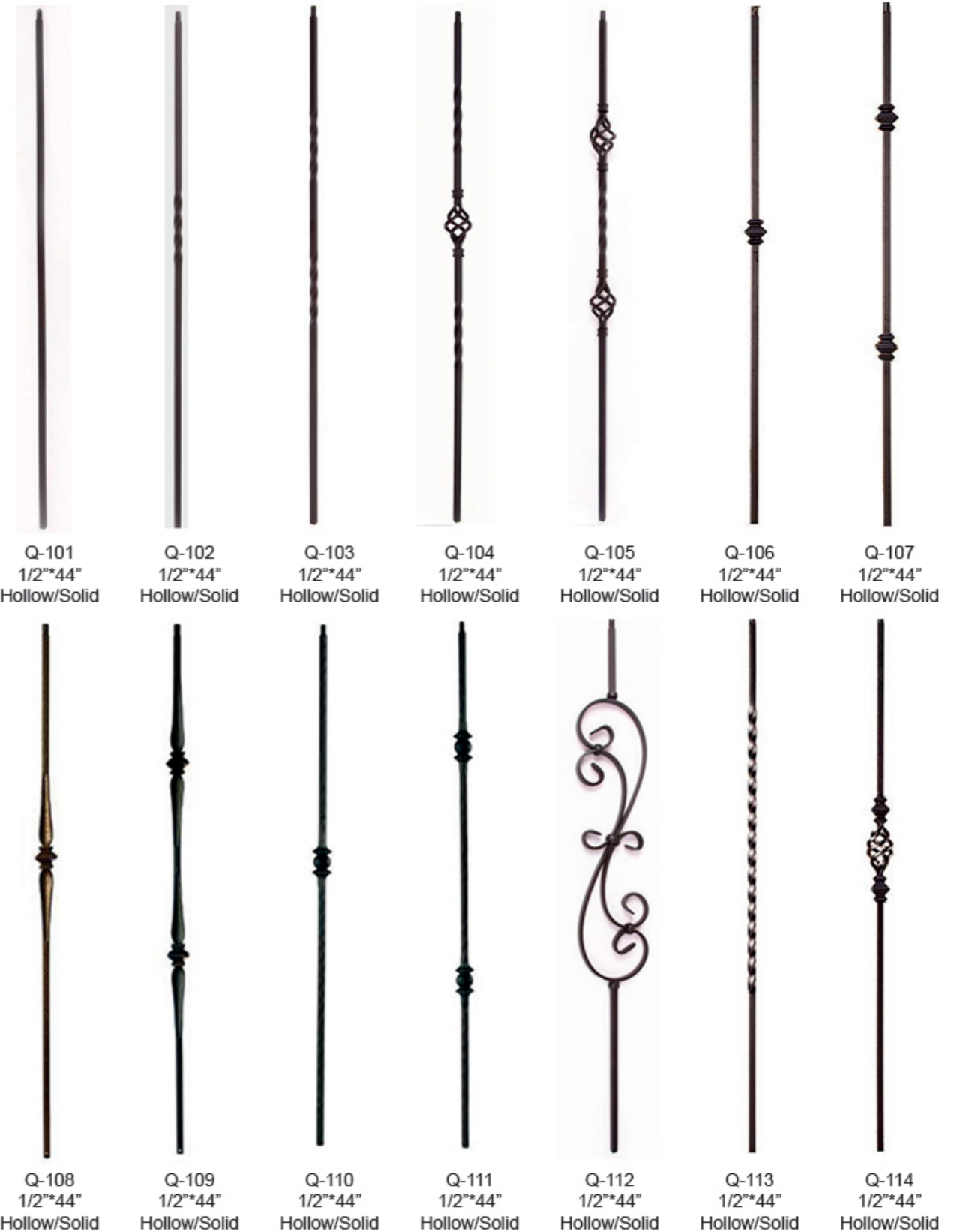
Our production capacity is about 4-5 container per month.

Our main markets are Europe, North America, the Middle East, Southeast Asia and Australia.



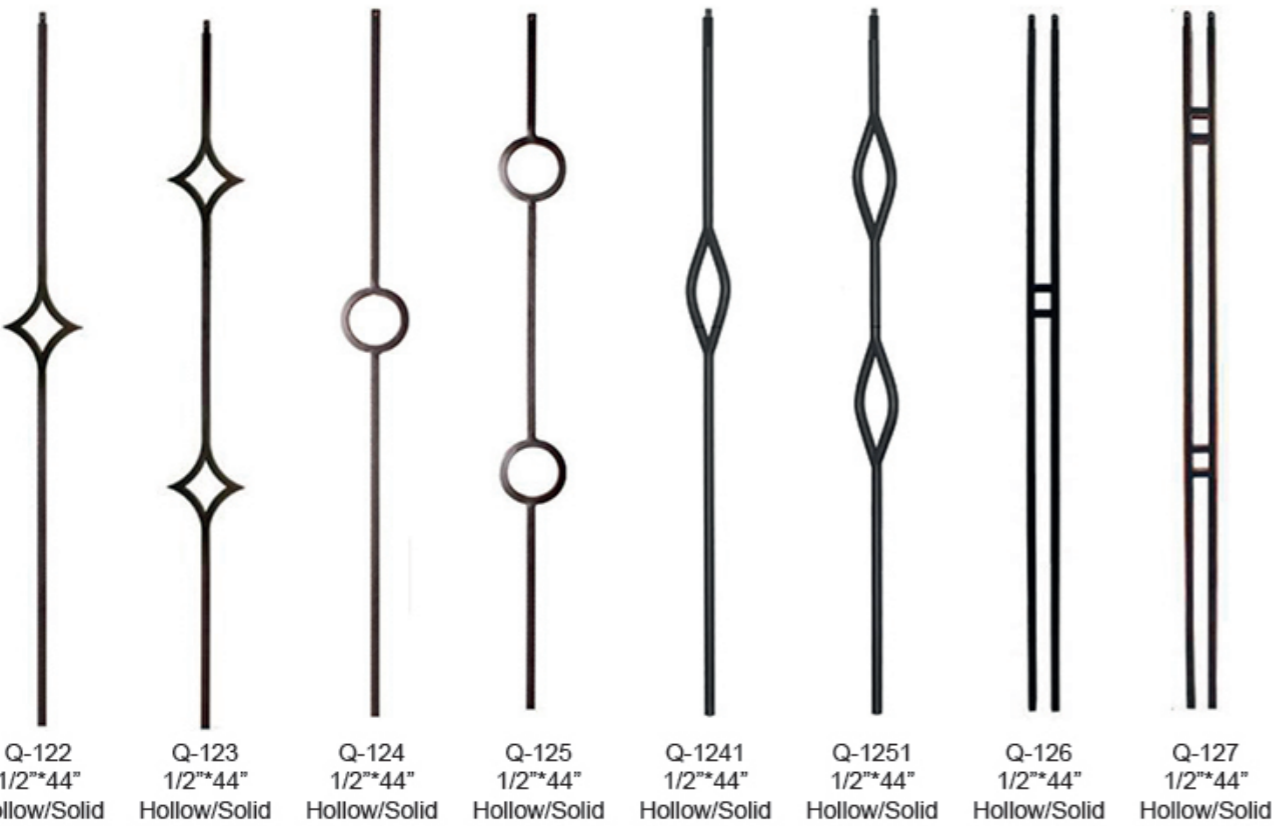
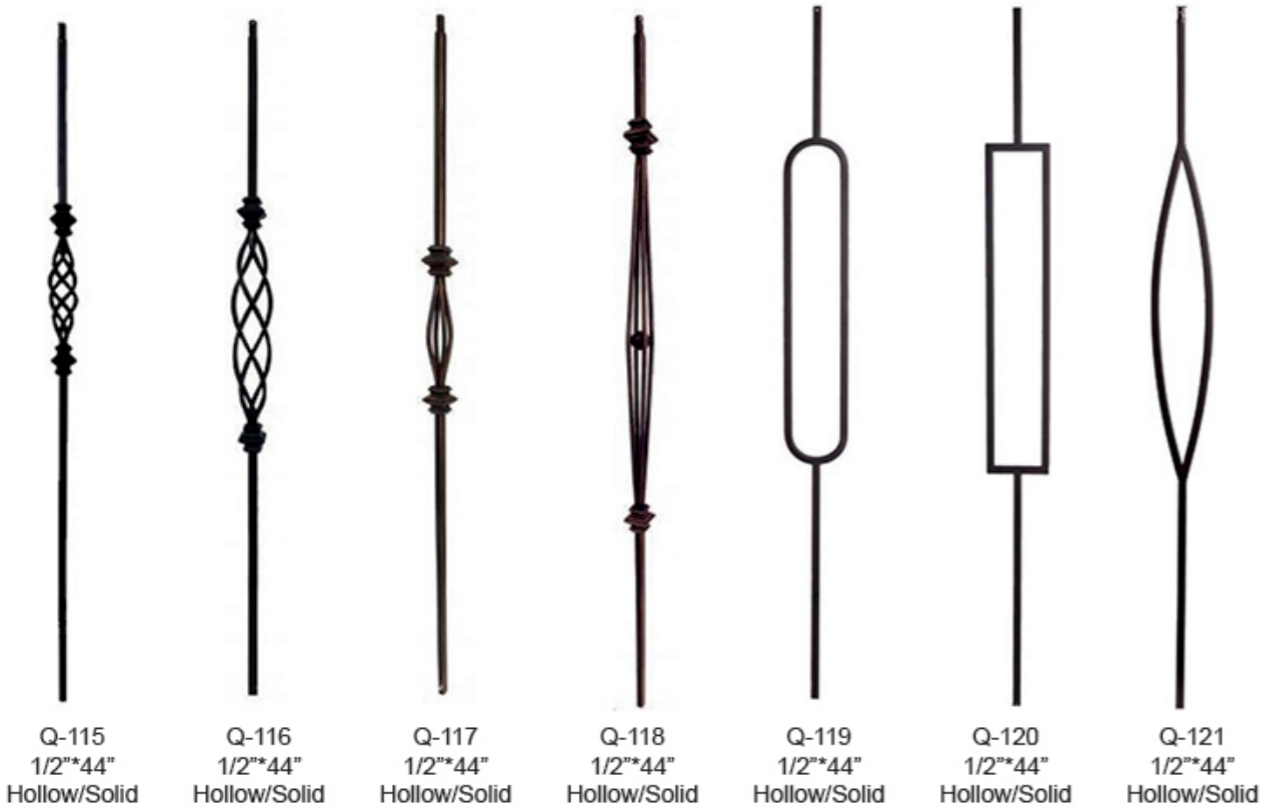
Q Series-Sq 1/2" Iron Spindles

STB MB GMG ORC ORB BW WG SV



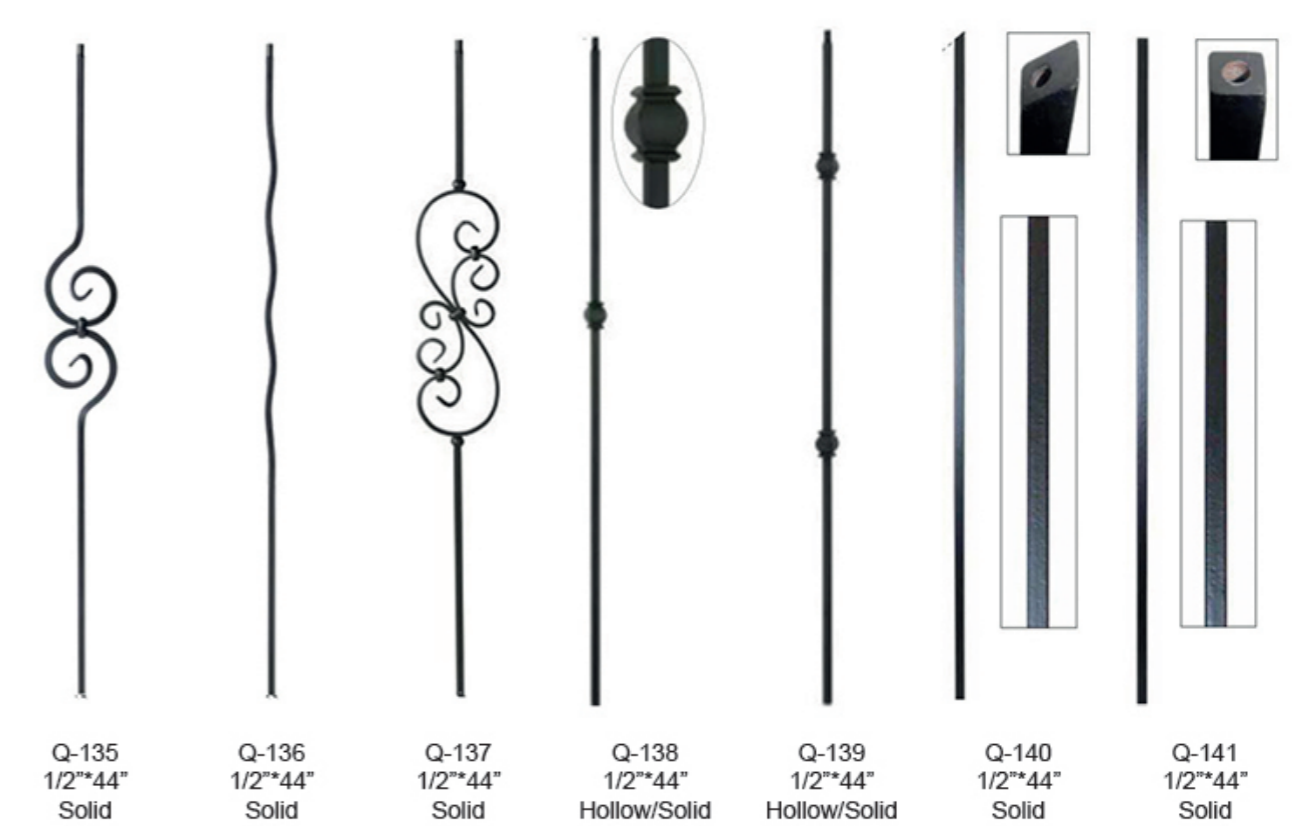
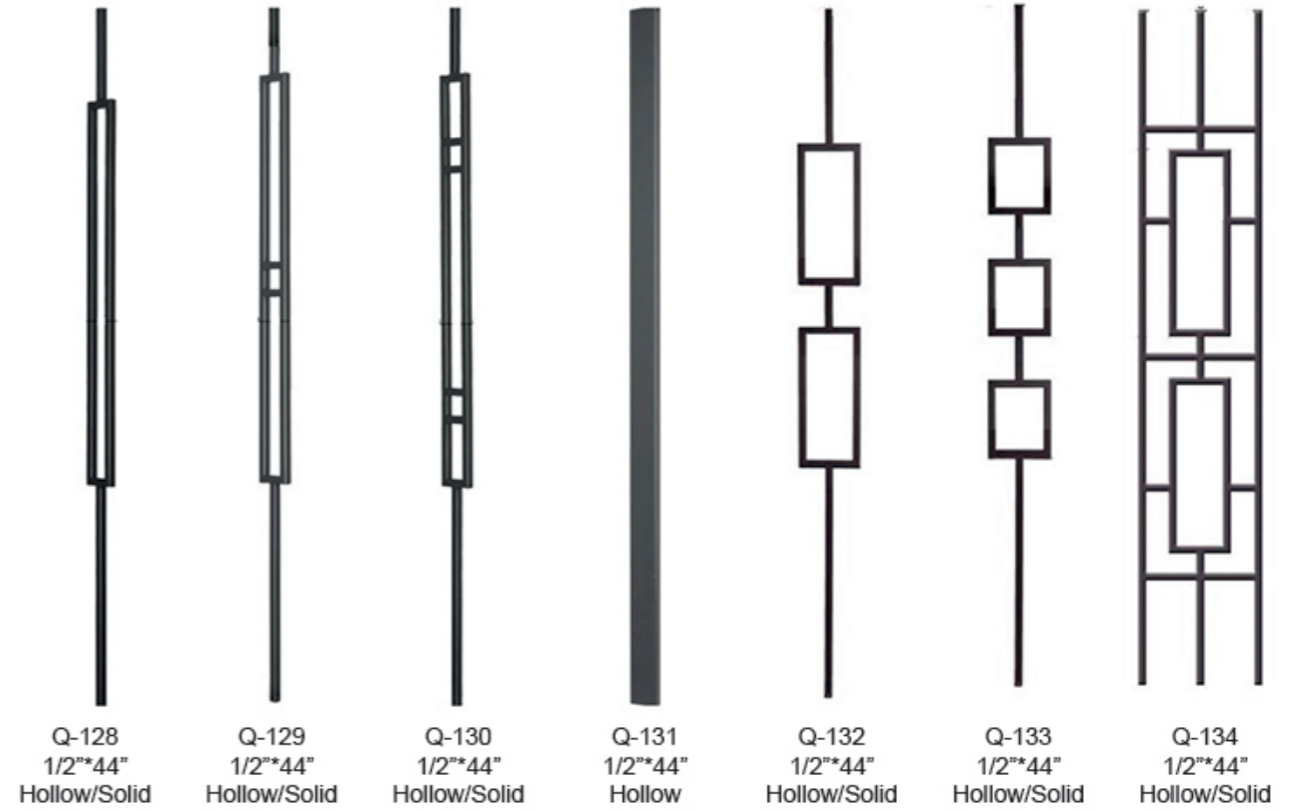
Q Series-Sq 1/2" Iron Spindles

STB MB GMG ORC ORB SV CV



Q Series-Sq 1/2" Iron Spindles

STB MB GMG ORC ORB SV CV



Q Series-Sq 1/2" Iron Spindles & Accessories

STB MB GMG



Q-145 1/2"*44" Solid
 Q-146 1/2"*44" Solid
 Q-147 1/2"*44" Solid
 Q-148 1/2"*44" Solid
 Q-149 1/2"*44" Solid
 Q-150 1/2"*44" Solid



Q-151 Fit 1/2"Spindle
 Q-152 Fit 1/2"Spindle
 Q-153 Fit 1/2"Spindle
 Q-154 Fit 1/2"Spindle
 Q-155 Fit 1/2"Spindle



Q-156 Fit 1/2"Spindle
 Q-157 Fit 1/2"Spindle
 Q-158 Fit 1/2"Spindle
 Q-159 Fit 1/2"Spindle
 Q-160 Fit 1/2"Spindle
 Plastic inserts Fit 1/2"Spindle

A Series-Sq 9/16" Iron Spindles

STB MB ORC ORB SV CV



A-201 9/16"*44" Solid
 A-202 9/16"*44" Solid
 A-203 9/16"*44" Solid
 A-204 9/16"*44" Solid
 A-205 9/16"*44" Solid
 A-206 9/16"*44" Solid
 A-207 9/16"*44" Solid
 A-208 9/16"*44" Solid
 A-209 9/16"*44" Solid



A-210 9/16"*44" Solid
 A-211 9/16"*44" Solid
 A-212 9/16"*44" Solid
 A-213 9/16"*44" Solid
 A-214 9/16"*44" Solid
 A-215 9/16"*44" Solid
 A-216 9/16"*44" Solid

A Series-Rd 9/16" Iron Spindles

STB MB ORB SV CV



A-217 9/16"×44" Solid
 A-218 9/16"×44" Solid
 A-219 9/16"×44" Solid
 A-220 9/16"×44" Solid
 A-221 9/16"×44" Solid
 A-222 9/16"×44" Solid
 A-223 9/16"×44" Solid



A-224 9/16"×44" Solid
 A-225 9/16"×44" Solid
 A-226 9/16"×44" Solid
 A-227 9/16"×44" Solid
 A-228 9/16"×44" Solid
 A-229 9/16"×44" Solid
 A-230 9/16"×44" Solid

Y Series-Rd 5/8" Iron Spindles

STB MB ORB BN



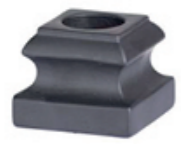
Y-301 5/8"×44" Hollow
 Y-302 5/8"×44" Hollow
 Y-303 5/8"×44" Hollow
 Y-304 5/8"×44" Hollow
 Y-305 5/8"×44" Hollow
 Y-306 5/8"×44" Hollow
 Y-307 5/8"×44" Hollow
 Y-308 5/8"×44" Hollow
 Y-309 5/8"×44" Hollow



Y-310 5/8"×44" Hollow
 Y-311 5/8"×44" Hollow
 Y-312 5/8"×44" Hollow
 Y-313 5/8"×44" Hollow
 Y-314 5/8"×44" Hollow
 Y-315 5/8"×44" Hollow
 Y-316 5/8"×44" Hollow
 Y-317 5/8"×44" Hollow

Y Series-Rd 5/8" Iron Spindles Accessories

STB MB ORB



YS-316
Fits 5/8" Spindle



YS-317
Fits 5/8" Spindle



YS-318
Fits 5/8" Spindle



YS-319
Fits 5/8" Spindle



YS-320
Fits 5/8" Spindle



YS-321
Fits 5/8" Spindle



YS-322
Fits 5/8" Spindle



YS-323
Fits 5/8" Spindle



YS-324
Fits 5/8" Spindle



YS-325
Fits 5/8" Spindle



YS-326
Fits 5/8" Spindle



YS-327
Fits 5/8" Spindle



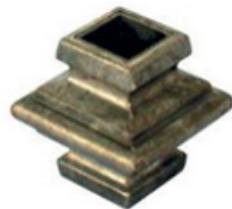
YS-328
Fits 5/8" Spindle



YS-329
Fits 5/8" Spindle



YS-330
Fits 5/8" Spindle



YS-326
Fits 5/8" Spindle



YS-327
Fits 5/8" Spindle



Metal Stair Balusters & Post



LD-901
1/2" x 44"
(12.7 x 1118mm)



LD-902
1/2" x 44"
(12.7 x 1118mm)



LD-903
1/2" x 44"
(12.7 x 1118mm)



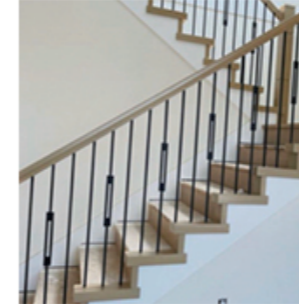
LD-904
5/8" x 44" (middle part 16 x 8mm)
(16 x 1118mm)



LD-905
1/2" x 44"
(12.7 x 1118mm)



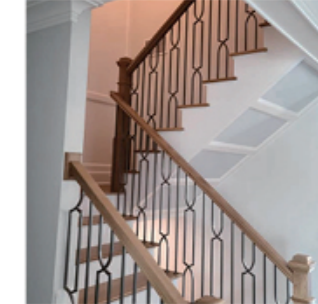
LD-906
1/2" x 44"
(12.7 x 1118mm)



LD-907
1/2" x 44"
(12.7 x 1118mm)



LD-908
1/2" x 44"
(12.7 x 1118mm)



LD-909
1/2" x 44"
(12.7 x 1118mm)



LD-910
1/2" x 44"
(12.7 x 1118mm)



LD-911
1/2" x 44"
(12.7 x 1118mm)



LD-912
1/2" x 44"
(12.7 x 1118mm)

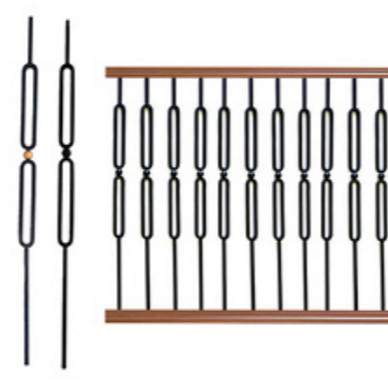
Metal Stair Balusters & Post



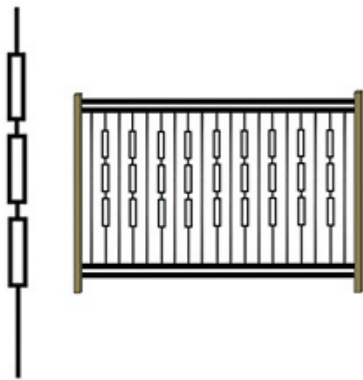
LD-913
□1/2"*44"
(□12.7*1118mm)



LD-914
□5/8"*44"
(□16*1118mm)



LD-915
□1/2"*44"
(□12.7*1118mm)



LD-916
□1/2"*44"
(□12.7*1118mm)



LD-917
○5/8"*37"
(○16*950mm)



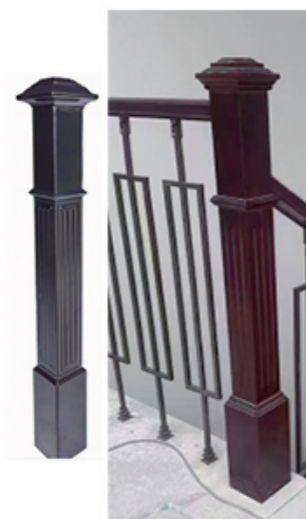
LD-918
○23*950mm



LD-919
○5/8"*37"
(○16*950mm)



LD-920
○5/8"*37"
(○16*950mm)



LDPOST-01
Cast Aluminum
H42"*5"(H106.5*W120mm)
Weight:2.5kg

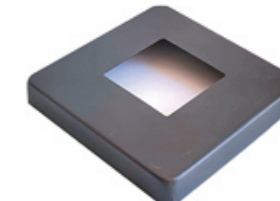


LDPOST-02
Cast Iron
H48"(1219mm)
Weight:25kg

Other Accessories



QB-171
fits 1 3/16"(30mm)Post



QB-172
fits 1 1/2"(38mm)Post
fits 2"(50mm)Post



QB-173
fits 1/2"(12mm)bar
fits 5/8"(16mm)bar



QB-174
fits 1/2"(12mm)bar



QB-175
fits 1/2"(12mm)bar
fits 9/16"(14mm)bar



QB-176
fits 3/4"(20mm)bar



QB-177
fits 1/2"(12mm)bar



QB-178
fits 1/2"(12mm)bar



QB-179
fits 1/2"(12mm)bar



QB-180
fits 5/8"(16mm)bar



QB-181
fits 5/8"(16mm)bar



QB-182
fits 3/4"(19mm)bar



NS-01
12mm
1080*780mm



NS-02
12mm
1280*780mm

High end luxury Staircase Column



LD-921



LD-922



LD-923



LD-924



LD-925



LD-926



LD-927



LD-928



LD-929



LD-930



LD-931

High end luxury Staircase Column



LD-932



LD-933



LD-934



LD-935



LD-936



LD-937



LD-938



LD-939



LD-940



LD-941



LD-942

High end luxury Staircase Column



LD-943



LD-944



LD-945



LD-946



LD-947



LD-948



LD-949



LD-950



LD-951



LD-952



LD-953



LD-954

High end luxury Staircase Column



LD-955



LD-956



LD-957



LD-958



LD-959



LD-960



LD-961



LD-962



LD-963



LD-964



LD-965



LD-966



LD-967

Stainless steel precision cast exit pool clip



SSC-001
H160 MIRROR



SSC-002
H160 MIRROR+



SSC-003
H160 BRUSHED



SSC-004
H160 BRUSHED



SSC-005
H160 BRUSHED



SSC-006
H165 MIRROR



SSC-007
H165 MIRROR -



SSC-008
H190 MIRROR



SSC-009
H200 BRUSHED



SSC-010
H230 BRUSHED



Stainless steel precision cast exit pool clip



SSC-011
H160 BRUSHED
BLACK



SSC-012
H160 WHITE



SSC-013
H160 TEXTURED
BLACK



SSC-014
H160 CHAMPAGNE
GOLD



SSC-015
H160 TITANIUM



SSC-016
H160 BRUSHED
ROSE GOLD



SSC-017
H160 BRUSHED



SSC-018
H200 BRUSHED



SSC-019
H200 WHITE



SSC-020
H200 BRUSHED
BLACK



SSC-021
H200 TEXTURED
BLACK



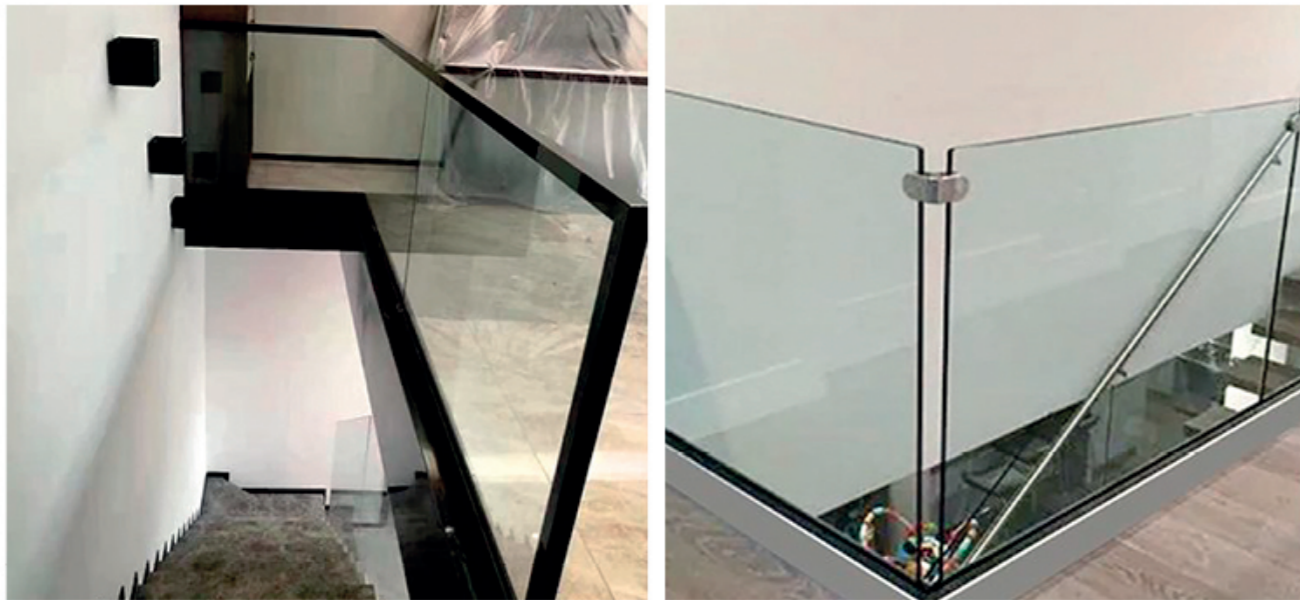
SSC-022
H200 TITANIUM
GOLD



SSC-023
H200 BRUSHED
ROSE GOLD



High end staircase floor/bottom groove



BG-001 BG-002 BG-003 BG-004

High end staircase column handrail accessories



Minimalist Luxury Style (WOOD + COPPER)

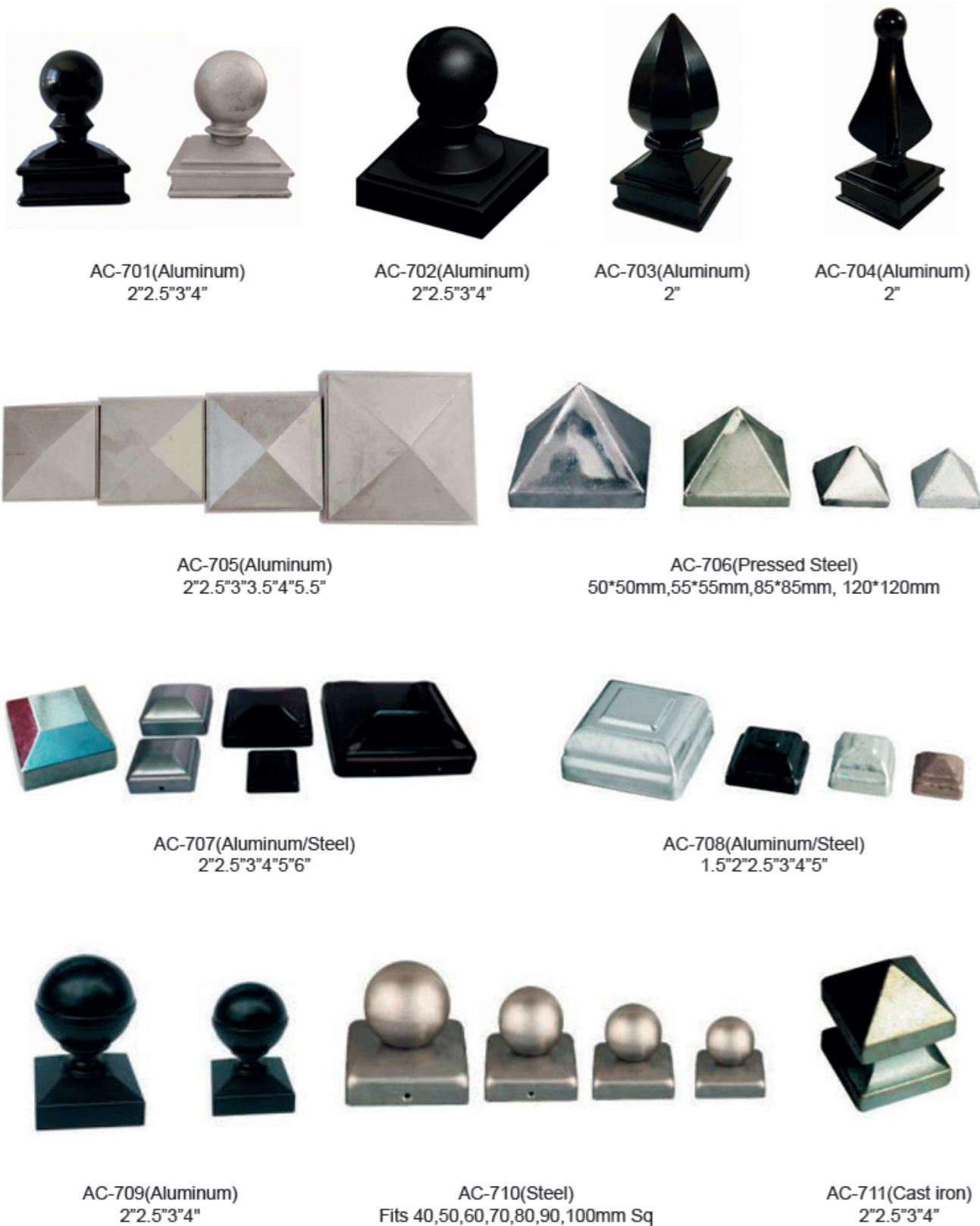


Minimalist Luxury Style (WOOD + COPPER)



Die Casting Aluminum Cap

STB ORB or No Powder Coated





Die Casting Aluminum Spears


STB ORB or No Powder Coated





IRON SCROLLS

CS-7301 12*6mm	CODE	SIZE(mm)
	A	80*45
	B	95*60
	C	100*60
	D	110*65
	E	115*65
	F	120*60
	G	130*70
	H	150*80
	I	160*80
	J	220*115

CS-7305 12*6mm	CODE	SIZE(mm)
	A	130
	B	120
	C	110
	D	100

CS-7306 12*6mm	CODE	SIZE(mm)
	A	120
	B	110
	C	100

CS-7302 12*6mm	CODE	SIZE(mm)
	A	250*120
	B	130*80
	C	120*75
	D	115*70
	E	105*65

CS-7303 12*6mm	CODE	SIZE(mm)
	A	150*65
	B	170*80
	C	220*100



CS-7307
290*130



CS-7308
210*140



CS-7309
120*100



CS-7310
115*80



CS-7311
270*70



CS-7312
210*95



CS-7313
220*75



CS-7314
450*85



CS-7315
350*80



CS-7316
150*90



CS-7317
220*110



CS-7318
240*200

WROUGHT IRON PANELS



RP-1701
350*350 | 12*6



RP-1702
300*300 | 12*6



RP-1703
590*590 ■ 2



RP-1704
250*250 ● 12



RP-1705
250*250 | 12*6



RP-1706
520*430 ■ 12



RP-1707
460*410 ■ 12



RP-1708
590*510 | 14*6



RP-1709
445*380 ■ 12



RP-1710
500*500 ■ 12



RP-1711
660*660 ■ 12



RP-1712
500*500 ● 12



RP-1713
710*640 | 14*5/14*6/16*8



RP-1714
360*915 | 16*8



RP-1715
850*790 | 25*8/20*8/16*8

WROUGHT IRON PANELS



RP-1716
920*480 ■ 10



RP-1717
820*330 ● 12



RP-1718
870*350 | 12*6



RP-1718
820*340 ● 12



RP-1720
520*340 ● 12



RP-1721
750*550 ● 12 12*16



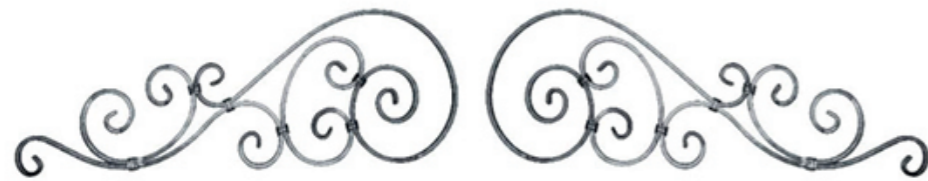
RP-1722
450*450 ■ 12



RP-1723
1000*500 ■ 10



RP-1724
640*950 | 16*8



RP-1725
265*840 | 16*8



RP-1726
330*1250 | 16*8



RP-1729
900*385 ■ 12



RP-1727
300*900



RP-1728
200*70



RP-1730
770*840 | 16*8



RP-1731
850*800 | 12*6



RP-1732
450*340 ■ 12



RP-1733
500*420 ● 12



RP-1734
865*840 | 16*8



RP-1735
630*470



RP-1736
800*1500 ● 12 ● 16



RP-1737
1200*500 ■ 10



RP-1738
800*300 ● 12



RP-1739
900*450 | 12*6



RP-1740
600*600 | 16*8



RP-1741
700*600 | 16*8



RP-1742
1080*600 ● 12



RP-1743
650*270 | 30*10



RP-1744
840*435 ■ 30



RP-1745
960*380 ■ 30



RP-1746
1100*300 ■ 30

WROUGHT IRON BALUSTERS/PICKETS

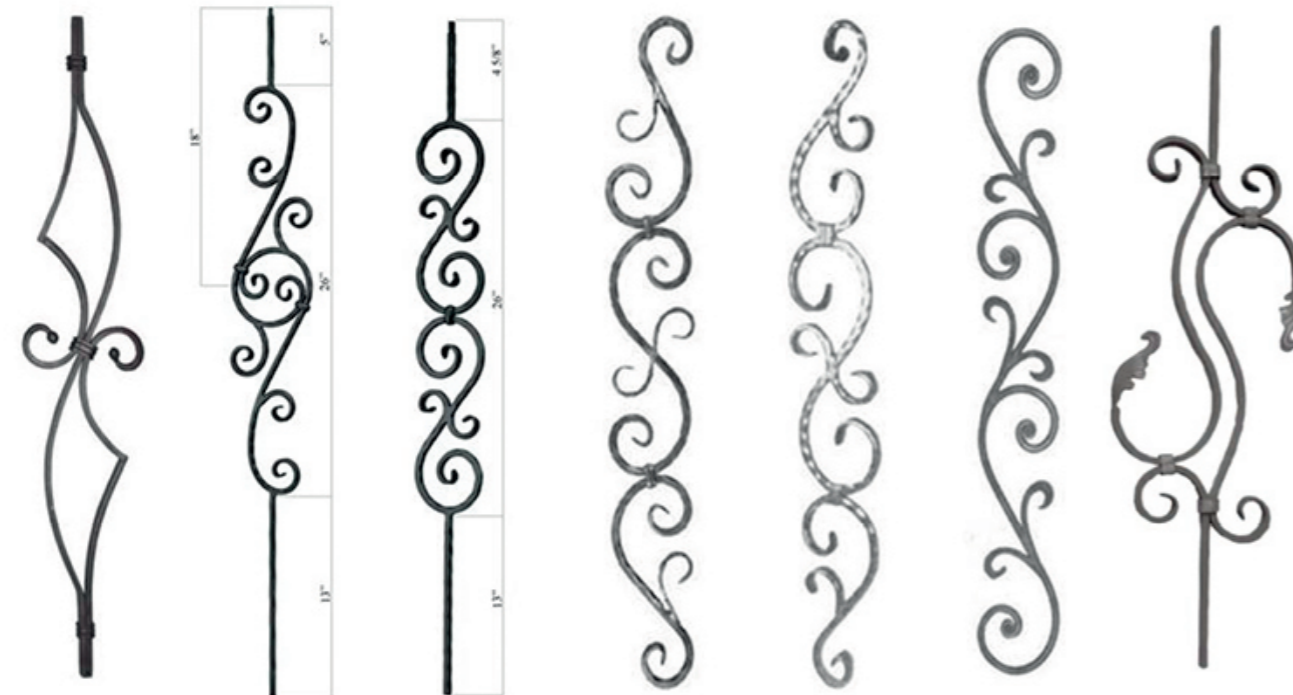


BL-1416 900*235 ■ 12,12*6
 BL-1417 900*150 ■ 12,12*6
 BL-1418 800*240 ■ 12
 BL-1419 800*155 ■ 12,12*6
 BL-1420 1000*185 ■ 12,12*6
 BL-1421 1000*260 ■ 12,12*6
 BL-1422 900*180 ■ 12,12*6

WROUGHT IRON BALUSTERS/PICKETS



BL-1430 900*230 | 16*8
 BL-1431 950*145 ■ 12,12*6
 BL-1432 900*250 ■ 12, ■ 8
 BL-1433 900*300 | 12*6
 BL-1434 930*480 ● 12
 BL-1435 900*230 ■ 12,12*6



BL-1423 900*140 | 16*8
 BL-1424 1117*200 ■ 12
 BL-1425 1117*125 ■ 12
 BL-1426 950*125 ■ 12,12*6
 BL-1427 800*125 ■ 12
 BL-1428 950*100 ● 12
 BL-1429 950*230 ■ 12,12*6



BL-1436 760*520 | 20*6
 BL-1437 720*230 | 20*6
 BL-1438 1000*215 ● 14
 BL-1439 1000*200 ● 12
 BL-1440 950*200 ● 12
 BL-1441 900*165 ■ 12,12*6
 BL-1442 1000*100 ■ 12